

# Newsletter

April 2003

## Welcome to the Netlink Inspection Systems Quarterly Review Newsletter!

It has been an extremely busy quarter for us and we are very happy with the workload. This edition of the newsletter deals with several issues developed over the previous quarter that highlights the need for adequate planning and flexibility in operations.

In this issue:

- We outline our newest business segment, **Netlink Inspection Services**, and how we are aiming to increase our ability to assist clients to effectively manage and execute their inspection programmes. Included is a report on the purchase and implementation of the *Inspection Manager Enterprise System* by **Apache Energy Limited**.
- We outline the changes made in the latest release of the *Inspection Manager Enterprise System v2*, and how these upgrades make it the most cost effective and powerful tool available for your company. Workpack or database preparation and mobilisation of hardware are two areas that easily incur cost overruns. Netlink mobilisation services are aimed at managing the pre-inspection integration of the workpack and, during mobilisation, providing a rapid and seamless integration between all elements of the offshore spread. Contact us to find out how we can help you on your next inspection.

We wish you all the best in these troubled times and hope that the coming quarter is as successful for you as ours has been.

**The team at Netlink Inspection Systems**

### CONTENTS:

- ★ **Netlink Inspection Services Launched**
- ★ **Apache Energy To Use Inspection Manager Enterprise Suite**
- ★ **Inspection Manager Enterprise System v2 Released**
- ★ **Inspection Manager Enterprise Support**
- ★ **New Directions**



#### NETLINK INSPECTION SYSTEMS

Level 9, Wembley Point  
1 Harrow Road,  
Wembley HA9 6DE,  
United Kingdom  
Ph: +44 208 795 6600  
Fax: +44 208 903 4296

Suite 1700,  
5847 San Felipe,  
Houston, 77057  
Texas USA  
Tel: +1 713 821 1657  
Fax: +1 713 821 1401

WebSpy Ltd  
137 7th Avenue  
W Kirkland, 98033  
Washington USA  
Tel: +1 425 828 4400  
Fax: +1 425 828 7115

Level 2, Suite 6  
20 Kings Park Road  
West Perth, WA 6005  
Australia  
Ph: +618 9321 3322  
Fax: +618 9321 3377

April 2003

# Newsletter

## NETLINK INSPECTION SERVICES

*Netlink Inspection Systems has formed a new service division for the supply of personnel and equipment specifically for inspection and engineering activities within the Oil & Gas Industry.*

**Netlink Inspection Systems** prides itself in its committed approach to providing customized solutions to meet the individual needs of all our clients. As part of this commitment, **Netlink Inspection Services** supplies qualified, experienced personnel for all inspection and related engineering tasks.



Inspection system in ROV Control Van

**Netlink Inspection Services** offers data collection, data analysis and delivery of final inspection reports using the *Inspection Manager Enterprise System*. By offering complimentary services to accompany the *Inspection Manager Enterprise* suite of products, **Netlink Inspection Services** provides clients with a flexible option in the management of their subsea assets.

**Netlink Inspection Services** believes that the best decisions are made using sound advice and knowledge. By providing our clients with the best possible knowledge we aim to assist them in the decision

making process as much as possible. Using the *Inspection Manager Enterprise System* database to store both qualitative and quantitative data for our clients, **Netlink Inspection Services** will enable accurate and fast report creation.

The formation of **Netlink Inspection Services** for the supply of personnel, coupled with the hire of the *Inspection Manager Enterprise System*, has been a result of increased, on-going software installation, system mobilization and inspection services requirements by existing clients using the *Inspection Manager Enterprise System*.

Mr. Mason Linden, formerly of Stolt Offshore Australia, will head **Netlink Inspection Services**. With many years experience in the Asia Pacific in inspection and engineering services, Mr. Linden will be focusing on expanding the provision of services offered both locally in Australia and internationally.

## APACHE ENERGY TO USE INSPECTION MANAGER ENTERPRISE SUITE

*Apache Energy Limited, Western Australia, has purchased the Inspection Manager Enterprise System for the management of inspections of their assets in the North West Shelf.*

**Apache Energy Limited** are organizing all asset inspection data into a centralized location using the *Inspection Manager Enterprise* solution, reducing management overheads and minimizing the amount of time required to organize an inspection program using disparate sources of information.



The *Inspection Manager Enterprise System* has the ability to be used by multiple spreads operating simultaneously,

### NETLINK INSPECTION SYSTEMS

Level 9, Wembley Point  
1 Harrow Road,  
Wembley HA9 6DE,  
United Kingdom  
Ph: +44 208 795 6600  
Fax: +44 208 903 4296

Suite 1700,  
5847 San Felipe,  
Houston, 77057  
Texas USA  
Tel: +1 713 821 1657  
Fax: +1 713 821 1401

WebSpy Ltd  
137 7th Avenue  
W Kirkland, 98033  
Washington USA  
Tel: +1 425 828 4400  
Fax: +1 425 828 7115

Level 2, Suite 6  
20 Kings Park Road  
West Perth, WA 6005  
Australia  
Ph: +618 9321 3322  
Fax: +618 9321 3377



April 2003

# Newsletter

including shallow water and deep water Diving spreads, ROV spreads and platform inspections.

**QCLI** engineering is providing the engineering expertise and inspection workscope for inclusion into the *Inspection Manager Enterprise System* and **Netlink Inspection Systems** are offering training and data organizational tools. Historical **Apache Energy Limited** data from previous databases will be imported into the system so that it can be referenced in real time during the inspections.

Netlink personnel are working with both **QCLI** and **Apache Energy Limited** during all phases of the inspection including software training, workscope implementation into the *Inspection Manager Enterprise System*, mobilisation of the software, inspection personnel, support and reporting.

**Apache Corporation** is one of the largest independent oil and gas exploration and development companies with operations in the United States, Canada, Egypt, Australia, Poland, China and Argentina. Throughout its 47 years, **Apache** has grown through exploratory drilling and development activities as well as strategic acquisitions

[www.apachecorp.com](http://www.apachecorp.com)

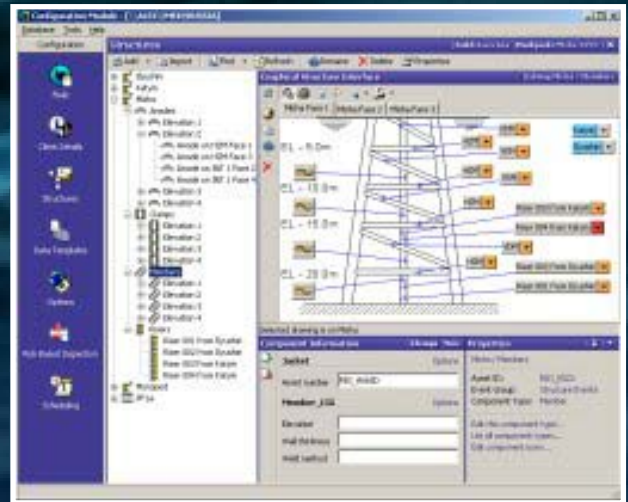
## INSPECTION MANAGER ENTERPRISE SYSTEM VERSION 2 RELEASED

*Netlink Inspection Systems* has released *Inspection Manager Enterprise System v2*.

Like all **Netlink Inspection System's** new releases, the functionality incorporated into this new version is a combination of requests from *Inspection Manager* users, technical advances, refined user interfaces and extensive market research.

Of primary concern was the need to maintain a continuous look and feel that

would not place existing users of the software at a disadvantage. The newly released version has kept all of the features which made the old system easy to use as well as addressed client and user concerns as much as practicable creating a simplified and straightforward interface.



Configuration Module interface

The improvements in *Inspection Manager Enterprise System v2* are aimed at rationalizing cost/time relationships during inspections and improving workflow with a more intuitive user interface. All changes have been made in consultation with clients, either directly or through specific client requests. The *Inspection Manager Enterprise System v2* and all previous versions of the *Inspection Manager* software are still supported.

## INSPECTION MANAGER ENTERPRISE SUPPORT

*From mobilisation of equipment and personnel though to demobilisation and report creation, Netlink Inspection Systems offers support for clients and contractors involved with the use of the Inspection Manager Enterprise System.*

Support from Netlink offices including the **Netlink Inspection Services** team, Netlink Training and client Account



Level 9, Wembley Point  
1 Harrow Road,  
Wembley HA9 6DE,  
United Kingdom  
Ph: +44 208 795 6600  
Fax: +44 208 903 4296

### NETLINK INSPECTION SYSTEMS

Suite 1700,  
5847 San Felipe,  
Houston, 77057  
Texas USA  
Tel: +1 713 821 1657  
Fax: +1 713 821 1401

WebSpy Ltd  
137 7th Avenue  
W Kirkland, 98033  
Washington USA  
Tel: +1 425 828 4400  
Fax: +1 425 828 7115

Level 2, Suite 6  
20 Kings Park Road  
West Perth, WA 6005  
Australia  
Ph: +618 9321 3322  
Fax: +618 9321 3377

April 2003

# Newsletter

Managers completes the integrated approach.

Based upon previous projects, the **Netlink Inspection Services** team is producing a roadmap for integration of the *Inspection Manager Enterprise System* into a clients operation.

The roadmap is a timeline outlining historical data conversion, software implementation, training of inspection personnel for offshore data collection and associated inspection data management.

Field testing of this service with current clients has developed a robust unit which is highly successful in meeting client cost requirements.

## NEW DIRECTIONS

### ➤ Training

The role of training new personnel in any new system is important for the ongoing operation of the system. **Netlink Inspection Systems** objective is to offer not only a software system but an integrated solution of which fully trained operators plays a major part.

The *Inspection Manager Enterprise* training curriculum takes new personnel through all aspects of the system providing industry examples, problems and solutions.

Training includes areas such as data capture, data review and QA, report creation and database management. Additional training on *Inspection Manager Enterprise System* database creation and system hardware are also available.

Training is conducted at **Netlink Inspection Systems** offices or at the client's site of operations at the client's request.

### ➤ Client Liaison

**Netlink Inspection Systems** is implementing a new Business Model aimed at improving the implementation of

*Inspection Manager* software into a clients organization. Account Managers ensure that communication between all stakeholders involved in the implementation of the software is maintained. NIS is able to track the process of implementation of the *Inspection Manager Enterprise System* software into the clients existing systems using in-house tracking software.

**Netlink Inspection Systems** new directive is to work closely with clients IT Departments as well as with all other stakeholders associated with the project including services and equipment providers. The placement of **Netlink Inspection Systems** in this position allows a streamlined operation, where it is more readily able to implement the necessary changes to accommodate client requirements.

### ➤ Customized Inspection Manager solutions

**Netlink Inspection Systems** is investigating the development of a customized set of *Inspection Manager* solutions for small to medium-sized clients.

Market research indicates that specialized versions of the *Inspection Manager* software, incorporating portions of the functionality of the current *Inspection Manager Enterprise System*, will meet the requirements of a number of small to medium businesses currently unable to afford a complete software solution.

Initially two solutions will be developed, one to cover simple data capture and reporting and another to cover the cycle of maintenance on small plant and equipment. Both solutions will be able to integrate back into the *Inspection Manager Enterprise System* to take advantage of the greater range of tools available if clients want to upgrade later.

## NETLINK INSPECTION SYSTEMS

Level 9, Wembley Point  
1 Harrow Road,  
Wembley HA9 6DE,  
United Kingdom  
Ph: +44 208 795 6600  
Fax: +44 208 903 4296

Suite 1700,  
5847 San Felipe,  
Houston, 77057  
Texas USA  
Tel: +1 713 821 1657  
Fax: +1 713 821 1401

WebSpy Ltd  
137 7th Avenue  
W Kirkland, 98033  
Washington USA  
Tel: +1 425 828 4400  
Fax: +1 425 828 7115

Level 2, Suite 6  
20 Kings Park Road  
West Perth, WA 6005  
Australia  
Ph: +618 9321 3322  
Fax: +618 9321 3377



April 2003

# Newsletter

## ➤ **Analysis and Planning Module Development**

Further extending the range of tools available within *Inspection Manager Enterprise System*, the **Analysis and Planning Module** provides scope of work and planning features not previously found in inspection software.

The **Analysis and Planning Module** closes the gap in the integrity management lifecycle of subsea asset inspection. The module links the data captured during inspections to the planning of future inspections. This link includes risk-based trending and analysis capabilities, leading into greater planning and scheduling features.

The modules function builder creates user-defined algorithms that are applied to the inspection data. Creation of both linear and non-linear equations is possible, giving the client the most accurate analysis of the data available. The module is a single focal point for the management of asset integrity data, ensuring quality assurance for the client.

**Netlink Inspection Systems** has a client driven philosophy when it comes to the future development of the *Inspection Manager Enterprise System*, and the **Analysis Planning Module** is evidence that this philosophy works.

## Netlink Inspection Systems Summary

**Netlink Inspection Systems** is a computer software developer that specializes in the development of computerized inspection software and services for the Oil and Gas industry and other land based industries.

**Netlink Inspection Systems** was established in 1994 to develop *Inspection Manager*, an integrated inspection and reporting software application for the Oil and Gas Industry. It is a wholly Australian-owned company and the head office is based in Perth, Western Australia where a development team of eight personnel work continually with the *Inspection Manager* suite of programs.

**Netlink Inspection Systems** is owned by WebSpy Ltd, and has offices in the United Kingdom, Australia and the United States. WebSpy Ltd is a public company listed on the Australian Stock Exchange (ASX) and develops internet monitoring software solutions. More information regarding WebSpy Ltd. can be found at [www.webspy.com](http://www.webspy.com)



### NETLINK INSPECTION SYSTEMS

Level 9, Wembley Point  
1 Harrow Road,  
Wembley HA9 6DE,  
United Kingdom  
Ph: +44 208 795 6600  
Fax: +44 208 903 4296

Suite 1700,  
5847 San Felipe,  
Houston, 77057  
Texas USA  
Tel: +1 713 821 1657  
Fax: +1 713 821 1401

WebSpy Ltd  
137 7th Avenue  
W Kirkland, 98033  
Washington USA  
Tel: +1 425 828 4400  
Fax: +1 425 828 7115

Level 2, Suite 6  
20 Kings Park Road  
West Perth, WA 6005  
Australia  
Ph: +618 9321 3322  
Fax: +618 9321 3377

